

Concrete Quick Fix (343)



Product Description:

A two component hybrid urethane packaged in 300ml x 300ml dual cartridge system.

Product Benefits:

- Permanent Repair– doesn't pop out
- Cures in twenty minutes for traffic or coating
- Quick and easy surface preparation
- No minimum or maximum depth restrictions
- Cures in temperatures down to 20°F
- Compatible with most floor coatings
- Extremely thin– low surface tension
- No shrinkage– 5% elongation
- Excellent chemical resistance
- May be painted
- Resealable tubes— not pot mixed— eliminates waste
- Very low odor, can be used in a wide range of indoor areas



Typical Applications

This product can be used for the repairing of spalled concrete, holes, cracks, threshold, or uneven concrete slabs.



Standard Resins

Asheville, NC

Contact us today at 828-989-6614

Concrete Quick Fix (343)

Physical Properties

Solids By Weight:
nearly 100% cured

Volatile Organic Content:
5.5 grams per liter cured

Standard Colors:
Gray colored when mixed and cured. The gray color will not develop until the curing process takes place.

Recommended Film Thickness:
Can be applied at variable thicknesses with the use of any dry sand aggregate.

Coverage Per Unit:
Coverage is dependent on hole size and amount of aggregate sand used. One cartridge set will repair approximately 100 feet of 1/4" x 1/4" cracks in a concrete floor.

Packaging Cubic Inches
300ml x 300ml 36 (approx)

Packaged as a dual cartridge system with two 300ml cartridges per set. Sold in packages of six sets per box.

Mix Ratio:
1:1 by volume

Shelf Life:
1 year in unopened containers

Compressive Strength:
4,400 as slurry with aggregate sand

Tensile Strength:
4,500 psi

Bond Strength:
535 psi (concrete failure)

Hardness:
Shore D = 71

Impact Resistance:
Excellent

Abrasion Resistance:
excellent

Viscosity
less than 30cps typical

Primer:
For patch work, use the liquid as dispensed from the dual cartridge system with static mixing nozzle. This will allow for greater penetration into the concrete.

Topcoat:
None required. However, many types of products can be used as coatings or overlays for the area that has been patched.

DOT Classification:
"Not Regulated"

Application Temperature:
20-90 degrees F (lower temperatures will require additional cure time)

See our technical data sheet for complete application instructions, technical information, product warranty and limitations.

Cure Schedule (70 °F)

pot life – 100 gram mass	1-4 minutes
Recoat or topcoat	1 hour
Light Foot Traffic	10-20 minutes
Full Cure (Heavy Traffic)	1 hour

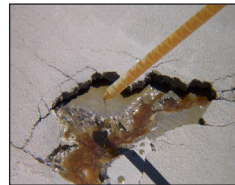
343 Concrete Quick Fix

Assemble



Assemble tube set, nozzle, end cap, flow control valve, and applicator tool as well as wire brush, trowel and aggregate sand.

Apply



Apply a thin layer of the mixed liquids from the cartridge set onto the concrete. For larger areas, it may be beneficial to use a small brush to spread the liquids to evenly cover the repair area.

Sprinkle



Sprinkle dry sand onto the repair area until the level of sand fills the hole and levels the repair area until level with the rest of the floor surface. Then saturate the sand with liquid. Reapply more sand and liquid as needed until the area is built up level to floor.

Trowel



Finally, trowel the floor to smooth out the area and remove any excess material. Allow the material to cure for twenty minutes before foot traffic.